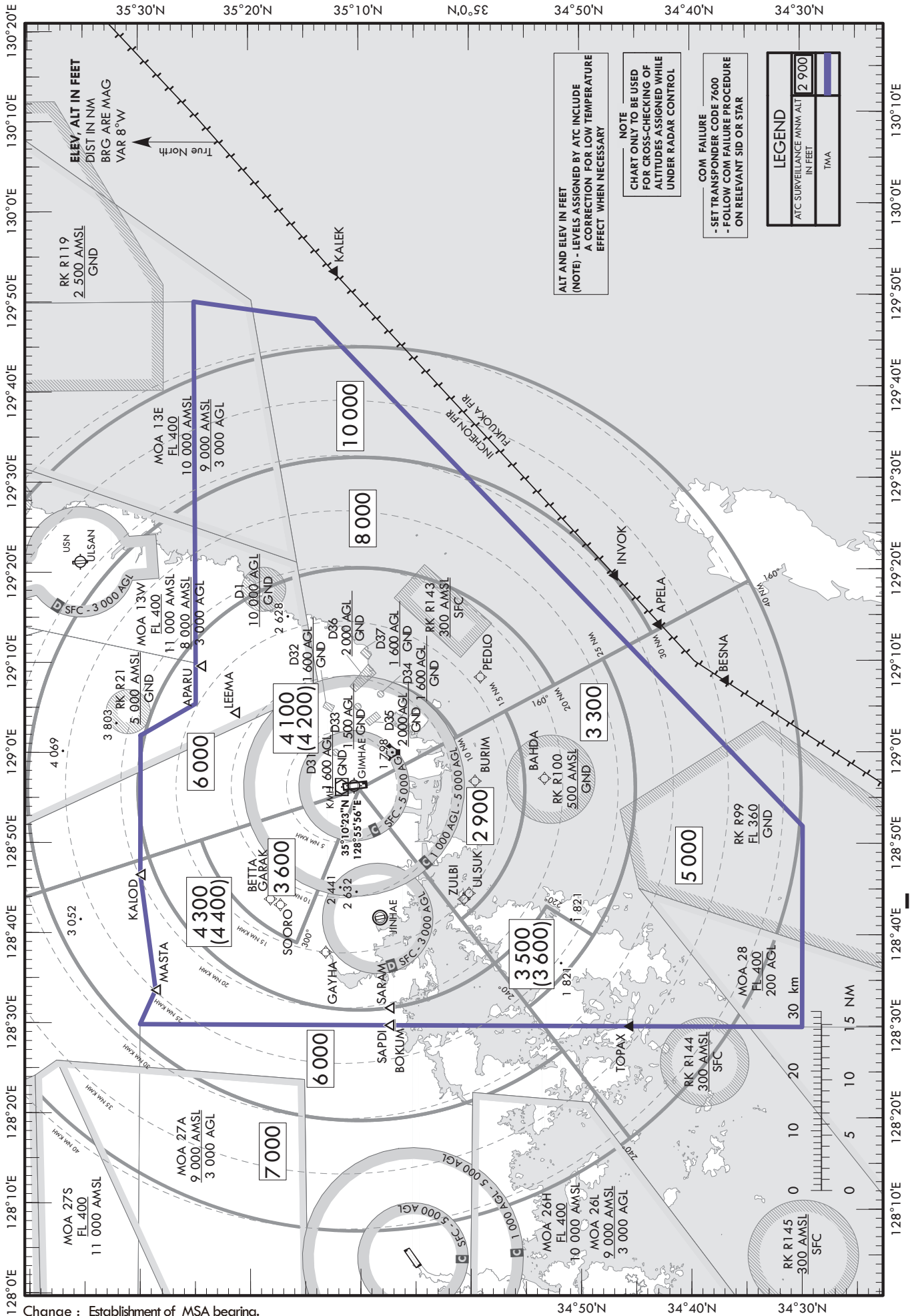


**ATC SURVEILLANCE MINIMUM  
ALTITUDE CHART - ICAO**

AERODROME ELEV 13 ft  
TRANSITION ALT 14 000 ft

APP 135.7 364.0

BUSAN/Gimhae Intl(RKPK)



ALT AND ELEV IN FEET  
(NOTE) - LEVELS ASSIGNED BY ATC INCLUDE  
A CORRECTION FOR LOW TEMPERATURE  
EFFECT WHEN NECESSARY

NOTE  
CHART ONLY TO BE USED  
FOR CROSS-CHECKING OF  
ALTITUDES ASSIGNED WHILE  
UNDER RADAR CONTROL

COM FAILURE  
- SET TRANSPONDER CODE 7600  
- FOLLOW COM FAILURE PROCEDURE  
ON RELEVANT SID OR STAR

LEGEND	
ATC SURVEILLANCE MINM ALT	2 900
IN FEET	
TMA	

Change : Establishment of MSA bearing.

**INTENTIONALLY**

**LEFT**

**BLANK**